

# Metropolitan<sup>®</sup> West

CUSTOM DIGITAL  
WALL COVERING





# Custom Wall Covering

## **PHYSICAL PROPERTIES**

52" width print edge to edge  
Interior and exterior applications

## **PRINTING MINIMUM**

3 yards

## **TESTING**

Type II high durability, federal spec ccc-w-498-d  
Flame rating: Class A: ASTM E-84  
Tunnel test NFPA life safety code 101  
Made with low voc vinyl  
Tested per CA-1350 Air Quality Standards  
Cadmium and lead free formulation  
*\*Please check for individual products*



# PLAYA

1707A E 28th Street, Long Beach, CA 90755  
P: 562.426.7701 E: [hello@metwest.com](mailto:hello@metwest.com)  
W: [metwest.com](http://metwest.com) CL: #775716





# MISTICO



## CANVAS



# LUCENTEZZA

1707A E 28th Street, Long Beach, CA 90755  
P: 562.426.7701 E: [hello@metwest.com](mailto:hello@metwest.com)  
W: [metwest.com](http://metwest.com) CL: #775716





LISCIO



DURABLE





ORO



# ARGENTO

1707A E 28th Street, Long Beach, CA 90755  
P: 562.426.7701 E: [hello@metwest.com](mailto:hello@metwest.com)  
W: [metwest.com](http://metwest.com) CL: #775716



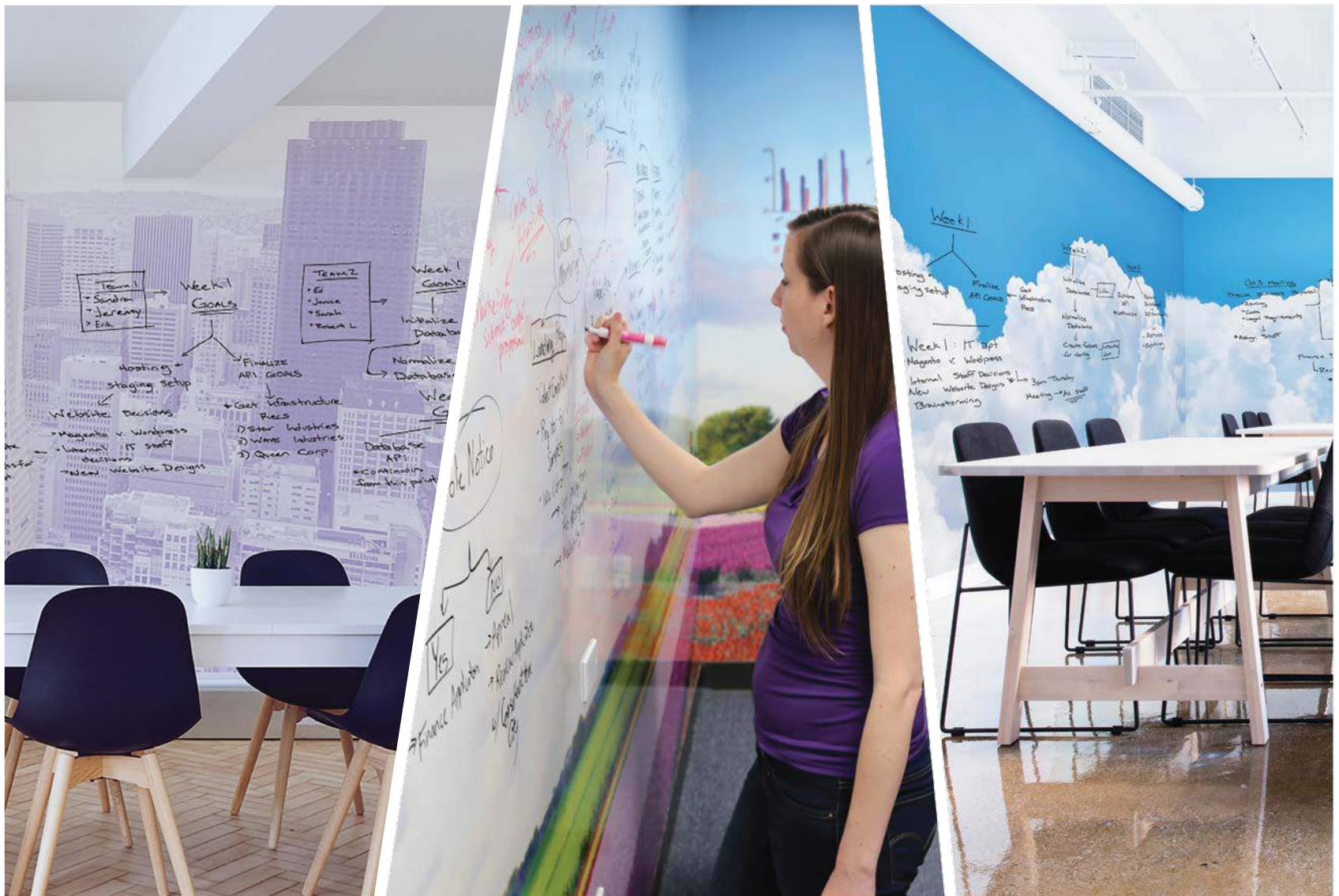


PIATTO





## The Team Collaboration Wall







# peerhatch

peerhatch

## **PHYSICAL PROPERTIES**

52" width print edge to edge

## **PRINTING MINIMUM**

### **LEAD TIME**

7 to 10 days after final approvals are received

PEEL ME!

Self Adhesive

WRITE ON ME!



The Team Collaboration Wall

The Non-Ghosting Writable Wall Covering  
The Alternative To Whiteboards & Dry Erase Paints

[peerhatch.com](http://peerhatch.com)



Type II Wall Covering

WRITE ON ME!



The Team Collaboration Wall

The Non-Ghosting Writable Wall Covering  
The Alternative To Whiteboards & Dry Erase Paints

[peerhatch.com](http://peerhatch.com)



The Team Collaboration Wall

6445 S. Tenaya Way #145, Las Vegas, NV 89113

P: 725.202.1646

W: [peerhatch.com](http://peerhatch.com)

E: [hello@peerhatch.com](mailto:hello@peerhatch.com)

Browse Our Collection of Designs at [peerhatch.com](http://peerhatch.com)  
Or Create Custom Artwork

## Textures



## Themes



## Designs





# Custom Printing



## PHYSICAL PROPERTIES

Max 63" print width; 100' rolls

Interior and exterior applications

## LEAD TIME

7 to 10 days after final approvals are received

## COLOR MATCHING

Indicate all Pantone Matching System (PMS) colors for your artwork.

If other colors are required, please provide reference for the color in the form of a swatch or paint chip - clearly indicated in your artwork.

## SUBMITTING FILES

Pixel based images: TIFF, PSD, PSB, JPG (high quality only)

Vector based graphics: AI, EPS, PDF (enable editing capabilities if available)

Files should be uploaded via <http://metwest.com/upload-file/>

# Custom Printing



For information and samples of our custom printing capabilities, please refer to Metropolitan West's Decorative Glass Film Binder in Section 08.



**PHYSICAL PROPERTIES**

Standard off-the-roll decorative and frosted films  
Available widths specified on individual samples

**LEAD TIME**

7 to 10 days after final approvals are received

# Decorative Glass Film

Decorative Glass Film





# Decorative Glass Films

For information and samples of our off-the-roll decorative and frosted films, please refer to Metropolitan West's Decorative Glass Film Binder in Section 08.







### **TYPES**

Prestige, Solar Control Films, Safety and Security, Anti-Graffiti, Thinsulate, Daylight Redirecting Film

### **Physical Properties**

Various widths, 100' rolls  
Interior and exterior applications

# Solar Control Film



MetWest is a 3M Authorized Platinum Dealer of commercial window film, providing clients with the highest quality window films along with top customer service and expert installation.

We provide:

- Prestige Series Sun Control Window Film
- Prestige Exterior Series Sun Control Window Film
- Silver P18 Series Sun Control Window Film
- Night Vision Film Sun Control Window Film
- Ultra Series Safety and Security Film
- Ultra Prestige Series Safety and Security Film
- And many more options

Contact us to schedule a ***free energy and cost analysis*** for your building. A member of our team will personally visit your property to provide a detailed assessment of how solar control film can save your company in energy costs.



## 3M™ Daylight Redirecting Film

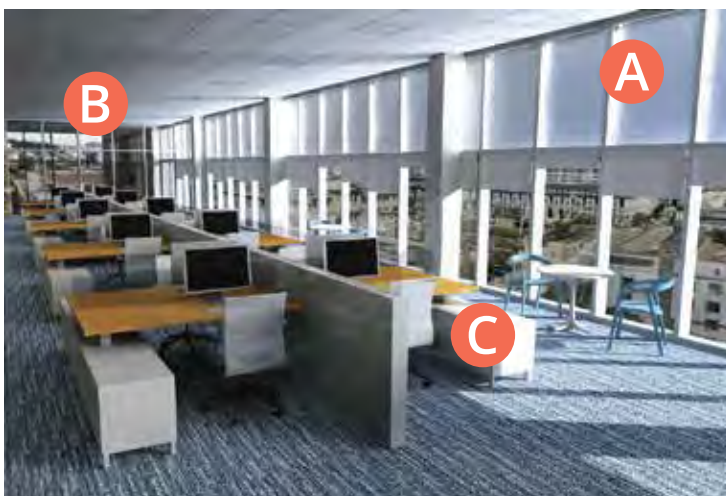
**Daylight Redirecting Film** is an effective solution which brings natural light deeper into the building, increases natural lighting throughout the entire building and reduces energy costs. Daylight Redirecting Film also has other benefits for inhabitants.

- Up to 52% in lighting energy savings
- Redirects natural lighting as far as 40 ft into the space
- Proven benefits of natural lighting include increased productivity, improved patient recovery times, and decreased absenteeism



### Clear Glass Windows

- A** Direct sunlight beams into the interior at low angles
- B** Artificial lighting is necessary for more internal spaces in the building
- C** Overwhelming direct light causes uncomfortable glare and overheating



### Daylight Redirecting Film

- A** Excess light from the upper windows is redirected to the ceiling
- B** Redirected light extends farther into the space, increasing natural lighting
- C** Glare is reduced while direct light in spaces near windows is reduced to comfortable levels



## Safety & Security Films



**3M**  
Platinum  
Dealer

We provide a wide array of film options for retrofit as well as other construction projects. Moreover, to complement the advantages of safety and security films, Metropolitan West has almost two decades of installation experience. To learn more how we can protect you and your business, contact us today.



### Benefits

- Reduces flying glass shards
- Costs up to 70% less than tempered glass
- Nearly invisible to the eye
- First defense against rocks, bricks and other projectiles
- Reduce fading of carpets and furnishings





Whether applied to windows, public transportation, transit stops, or even bathroom mirrors and stalls, anti-graffiti window film helps provide a strong first line of defense against paint, gouging, scratching and even acid etching.

If damage is done, simply replace the film for a fraction of what you would spend on repairing or replacing damaged glass.

## Product Performance and Technical Data





Film Properties (nominal)	AG-6
Film Thickness	≥0.006"
Tensile Strength	>25,000 psi
Break Strength	175 lbs/in
Elongation at Break	>100%
Peel Strength	1,000 g/in
Puncture Strength	132 lbs
Abrasion Resistance	<5% increase in haze

\*Film properties not for specification purposes.

# Thinsulate Window Film

**Thinsulate™ Window Film** enhances comfort and efficiency all year by providing virtually invisible insulation. By providing increased insulation comparable to upgrading single pane to double pane or double pane to triple pane windows, Thinsulate™ window film improves comfort by keeping the warmth in during the winter and the cool conditioned air in during the summer.

## Product Performance and Technical Data

Glass Type (All 1/4")	Film Type	Visible Light			Total Solar Energy Rejected	Solar Heat Gain Coefficient (G Value)	U Value		Heat Loss Reduction	Heat Gain Reduction	UV Light Rejected	Glare Reduction	Visible Light to Solar Heat Gain Ratio
		Reflected (interior)	Reflected (exterior)	Transmitted			btu/ hft²F	w/ m²K					
 Clear	Thinsulate™ 40	10%	7%	36%	59%	0.41	0.63	3.6	39%	50%	99.8%	59%	0.9
	Thinsulate™ 75	12%	15%	74%	47%	0.53	0.63	3.6	40%	35%	99.9%	17%	1.4
 Tinted	Thinsulate™ 40	9%	5%	22%	67%	0.33	0.63	3.6	39%	48%	99.9%	59%	0.6
	Thinsulate™ 75	10%	8%	44%	60%	0.40	0.63	3.6	40%	37%	99.9%	17%	1.1
 Double Clear	Thinsulate™ 40	11%	14%	32%	54%	0.46	0.35	2.0	26%	34%	99.8%	59%	0.7
	Thinsulate™ 75	17%	21%	66%	49%	0.51	0.35	2.0	26%	27%	99.9%	16%	1.3
 Tinted Clear	Thinsulate™ 40	11%	8%	19%	66%	0.34	0.35	2.0	26%	33%	99.9%	59%	0.6
	Thinsulate™ 75	15%	10%	40%	63%	0.37	0.35	2.0	26%	27%	99.9%	15%	1.1

## LEED Certification

Window films may be used toward the following LEED credits

► SS-8	► MR 1.1-1.2	► EQ-7.1	► EQ-8.1-8.2	► EA-1	► MR 5.1-5.2	► EQ-7.2	► ID
--------	--------------	----------	--------------	--------	--------------	----------	------





[metwest.com](http://metwest.com)

[hello@metwest.com](mailto:hello@metwest.com)

562.426.7701

**3M**

Platinum  
Dealer



To request a book of solar control film samples,  
please contact us at:

[hello@metwest.com](mailto:hello@metwest.com)

or

562.426.7701



**GLASS  
WALLS  
FLOORS  
CEILINGS  
& DOORS®**